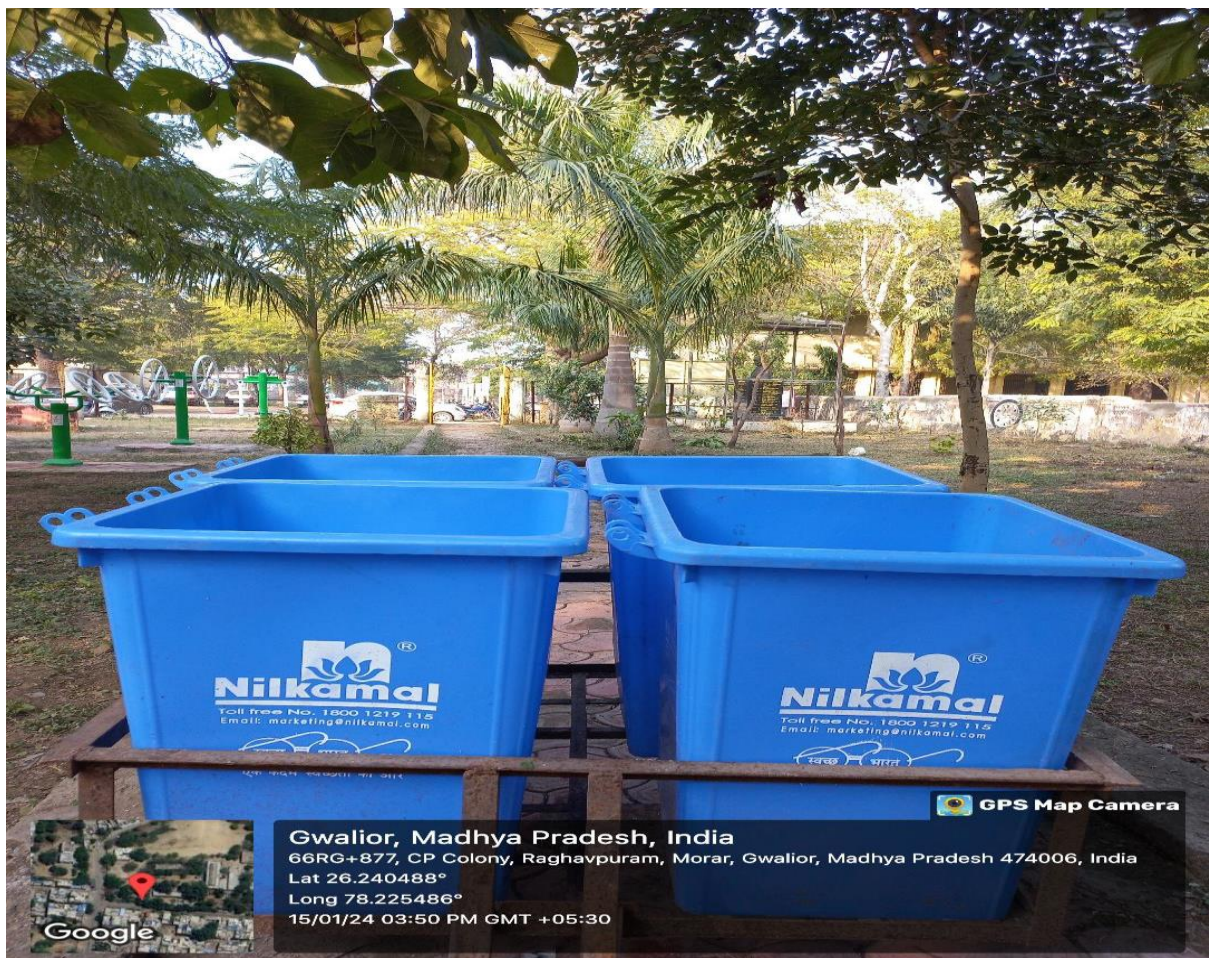


Shyamlal Pandviya Government P.G. College, Morar, Gwalior

MANAGEMENT OF WASTE IN COLLEGE CAMPUS

Biodegradable and non-biodegradable waste generated on college campuses is collected in dustbins provided in all departments. Later on, waste is segregated to be disposed of according. Non- biodegradable waste is also collected and segregated as recyclable and non-recyclable. Hazardous waste like batteries and chemicals are given away to disposal centres. Students are also made aware and encouraged to follow sustainable waste practices. This practice improves the sensitivity of students towards the environment and helps to reduce the harmful effects of plastic pollution in the surroundings.



DUSTBINS FOR WASTE COLLECTION IN COLLEGE CAMPUS



PLASTIC COLLECTION IN COLLEGE CAMPUS GIVE FOR RECYCLING



STUDENTS ENCOURAGED TO USE WASTE PLASTIC CONTAINERS TO GROW PLANTS



PLASTIC BOTTLES MADE BY STUDENTS TO REDUCE THE EFFECT OF PLASTIC WASTE ON ECOSYSTEM. THESE PLASTIC BOTTLES CAN BE USED IN CONSTRUCTION OR MAKING THE BOUNDARIES IN THE PARK.



GPS Map Camera
Gwalior, Madhya Pradesh, India
66RG+877, CP Colony, Raghavpuram, Morar, Gwalior, Madhya Pradesh 474006, India
Lat 26.240515°
Long 78.22593°
02/05/24 11:25 AM GMT +05:30



GPS Map Camera
Gwalior, Madhya Pradesh, India
66RG+877, CP Colony, Raghavpuram, Morar, Gwalior, Madhya Pradesh 474006, India
Lat 26.240483°
Long 78.22598°
02/05/24 11:25 AM GMT +05:30

ALL DRIED LEAVES AND ANIMAL WASTE ARE COLLECTED AND ADDED TO VERMICOMPOSTING PITS FOR DECOMPOSITION.



VERMICOPMOSTING PITS IN COLLEGE CAMPUS


प्राचार्य
शासकीय एस.एल.पी. स्वातकोलर महाविद्यालय
मुरार, (ग्वालियर)